

CHAPTER 62

MAIN ROTOR

<i>Figure</i>	<i>Title</i>	<i>Page</i>
62-1	Main Rotor Blade Assembly . . . . .	62.0
62-3	Main Rotor Blade Assembly . . . . .	62.2
62-5	Main Rotor Hub Installation . . . . .	62.4
62-7	Main Rotor Hub Installation . . . . .	62.6

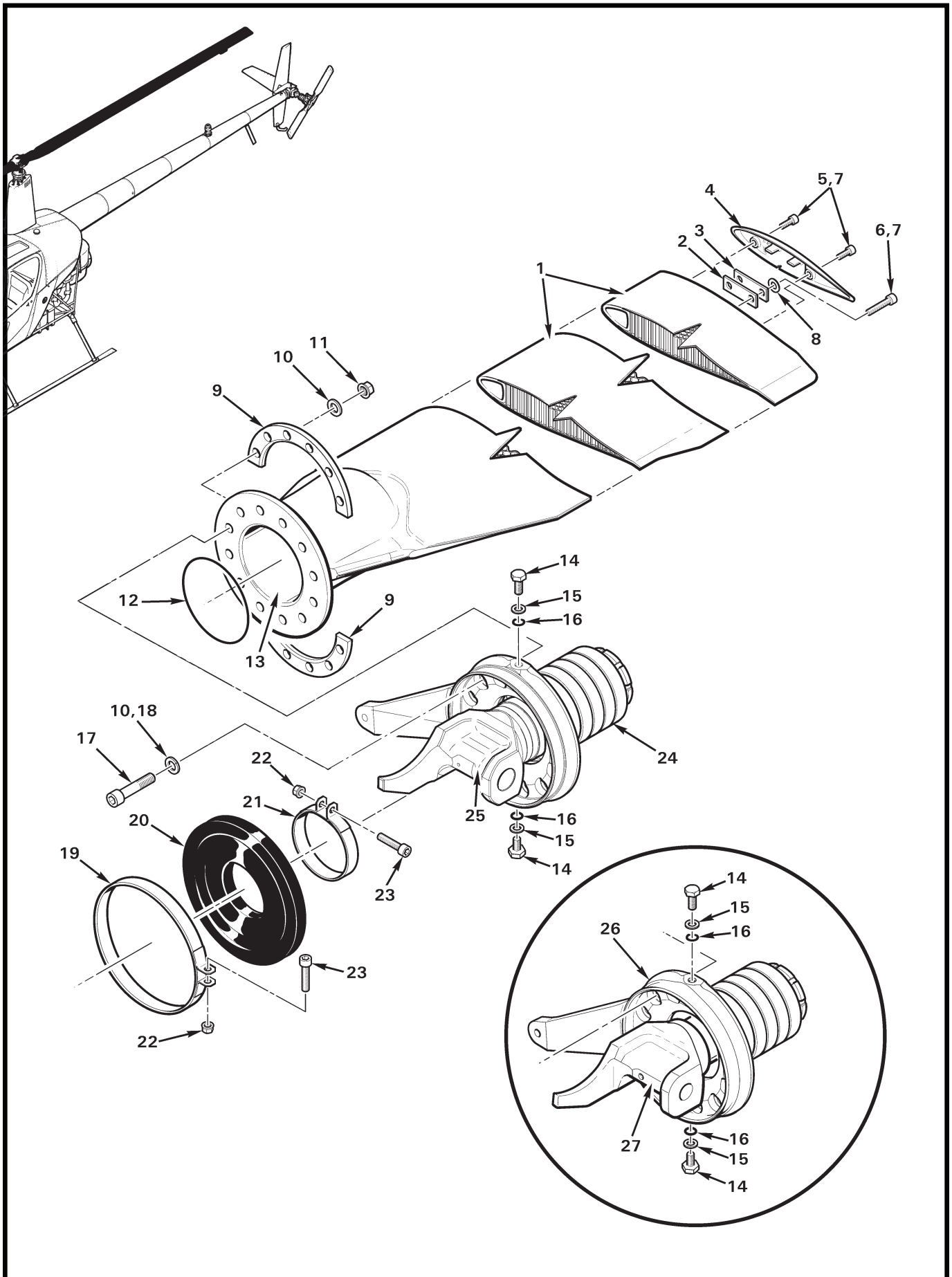


FIGURE AND INDEX NUMBER	PART NUMBER	DESCRIPTION	PARTS AVAIL	QTY PER ASSY
		<b>MAIN ROTOR BLADE ASSEMBLY*</b>		
62-1-1	A005-14	Main Rotor Blade and Spindle Assembly (Incl items 1 [A016-6], 9 thru 11, 13, 14, 17 [A722-5], 18 and 24) . . . . .	X	2
	A005-7	Main Rotor Blade and Spindle Assembly (Incl items 1 [A016-6], 9 thru 11, 13, 14, 17 [A722-2], 18 and 26) . . . . .	X	2
	A005-7R	Main Rotor Blade and Spindle Assembly (overhaul exchange; R8373 core deposit required) . . . . .	X	1
	A016-6**	Blade Assembly . . . . .	O	1
2	A298-2	Balance Strip (15 grams, 0.125-inch thick steel) . . . . .	X	A/R
3	A298-3	Balance Strip (5 grams, 0.032-inch thick steel) . . . . .	X	A/R
4	A300-3	Tip Cover (round) . . . . .	X	1
5	NAS1351N3-10P	Screw (install using item 7) . . . . .	X	2
6	A722-4	Screw (install using item 7) . . . . .	X	2
7	A257-9	Anti-Seize – Loctite Silver Grade . . . . .	X	A/R
8	NAS1149F0332P	Washer (or NAS1149F0363P as required for balance) . . . . .	X	A/R
9	A253-2	Spacer . . . . .	O	2
10	NAS1149F0563P	Washer (install using item 18, both sides) . . . . .	X	24
11	D210-5	Nut . . . . .	X	12
12	A215-129	O-Ring . . . . .	O	1
13	A257-4	Oil (to fill blade housing) . . . . .	X	A/R
14	B289-2	Bolt (Incl items 15 and 16) . . . . .	X	2
15	—	Washer . . . . .	O	1
16	A215-902	O-Ring . . . . .	X	1
17	A722-5	Screw (A005-7 MR blade and spindle assembly revision AM thru AQ, and A005-14 MR blade and spindle assembly revision AR and subsequent) . . . . .	O	12
	A722-2	Screw (A005-7 MR blade and spindle assembly revision AL) . . . . .	O	12
18	B270-1	Sealant (2-oz tube) . . . . .	X	A/R
19	A165-7	Clamp Assembly (Incl items 22 and 23) . . . . .	X	1
20	A156-3	Boot (gray, cold weather) . . . . .	X	1
	A156-4	Boot (black, standard) . . . . .	X	1
21	A165-1	Clamp Assembly (Incl items 22 and 23) . . . . .	X	1
22	MS21042L08	Nut . . . . .	X	2
23	NAS1352-08-12P	Screw . . . . .	X	2
24	A005-15	Spindle Assembly (includes items 12, 19 thru 21, and 25) . . . . .	O	1
25	A158-3	Spindle . . . . .	O	1
26	A005-8	Spindle Assembly (includes items 12, 19 thru 21, and 27) . . . . .	O	1
27	A158-1	Spindle . . . . .	O	1

NOTES \* Aluminum skin blade; see Figure 99-41 for shipping crate.  
 \*\* Critical part; see R22 Maintenance Manual.

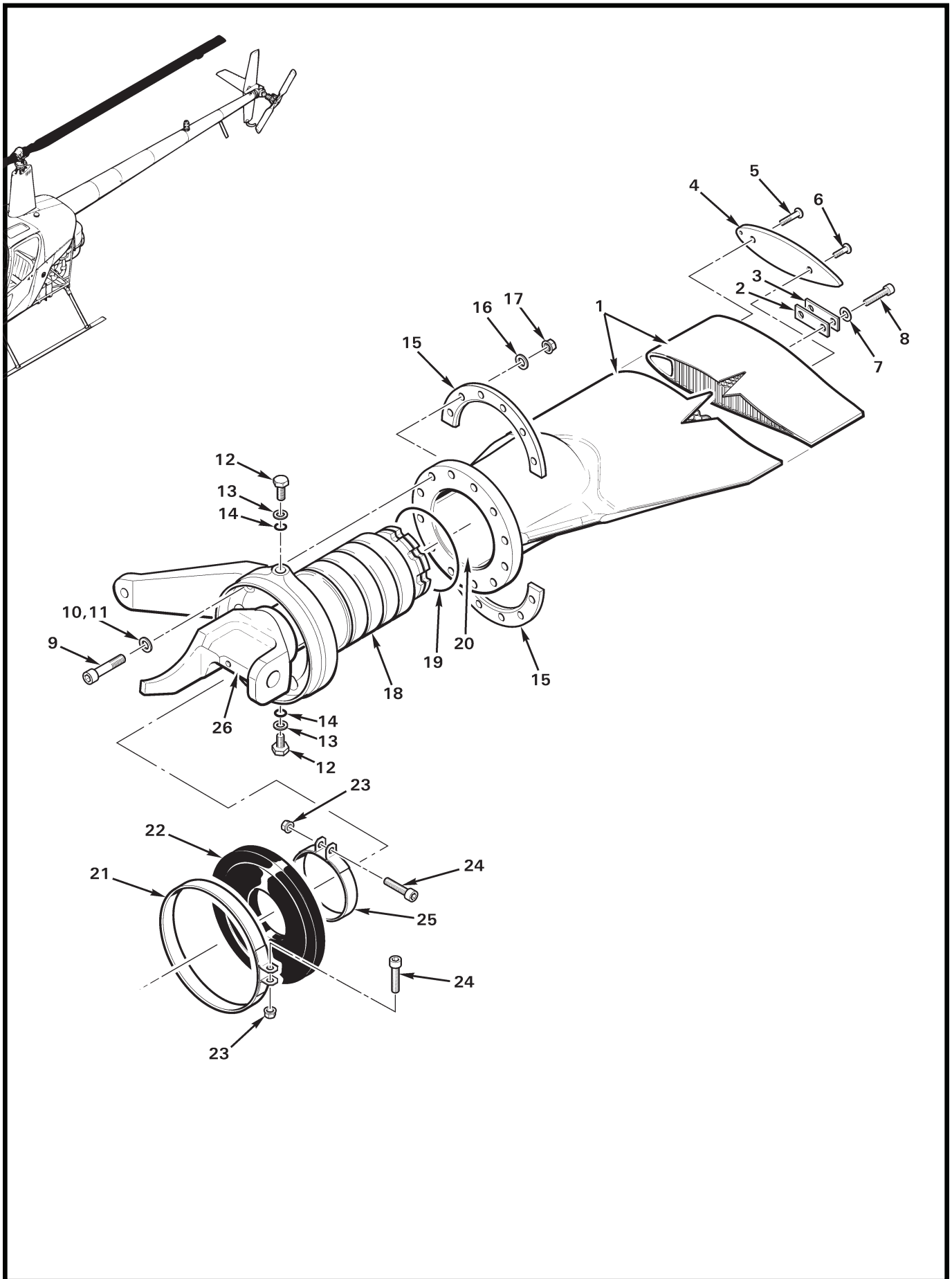


FIGURE AND INDEX NUMBER	PART NUMBER	DESCRIPTION	PARTS AVAIL	QTY PER ASSY
		<b>MAIN ROTOR BLADE ASSEMBLY*</b>		
62-3-1	A005-6	Main Rotor Blade and Spindle Assembly (Ref, no longer available. see Figure 62-1.) . . . . .	O	2
	A016-4**	Blade Assembly (Ref; no longer available) . . . . .	O	1
2	A298-2	Balance Strip (15 grams, 0.125-inch thick steel) . . . . .	X	A/R
3	A298-3	Balance Strip (5 grams, 0.032-inch thick steel) . . . . .	X	A/R
4	A300-2	Tip Cover (flat) . . . . .	X	1
5	MS24694-C54	Screw . . . . .	X	1
6	MS24694-C51	Screw . . . . .	X	1
7	NAS1149F0332P	Washer (or NAS1149F0363P as required for balance) . . . . .	X	A/R
8	A722-4	Screw . . . . .	X	2
9	A722-2	Screw (A005-2 main rotor blade and spindle assembly revision AF thru AH, and A005-6 main rotor blade and spindle assembly revision AI thru AK) . . . . .	O	12
	A722-1	Screw (A005-2 main rotor blade and spindle assembly revision S thru AE) . . . . .	O	12
	NAS1351-4-20	Screw (A005-2 main rotor blade and spindle assembly revision N and prior) . . . . .	O	12
10	A722-3	Washer (Ref; chamfered) . . . . .	O	12
11	B270-1	Sealant (2-oz tube) . . . . .	X	A/R
12	B289-2	Bolt (includes item 13 and 14) . . . . .	X	2
13	—	Washer . . . . .	O	1
14	A215-902	O-Ring . . . . .	X	1
15	A253-1	Spacer . . . . .	O	2
16	A141-11	Washer . . . . .	X	12
17	D210-4	Nut . . . . .	X	12
18	A005-3	Spindle Assembly (Incl items 21, 22, 25, and 26) . . . . .	O	1
19	A215-039	O-Ring . . . . .	O	1
20	A257-4	Oil (to fill blade housing) . . . . .	X	A/R
21	A165-2	Clamp Assembly (Incl items 23 and 24) . . . . .	X	1
22	A156-1	Boot (black, standard) . . . . .	X	1
	A156-2	Boot (gray, cold weather) . . . . .	X	1
23	MS21042L08	Nut . . . . .	X	2
24	NAS1352-08-12P	Screw . . . . .	X	2
25	A165-1	Clamp Assembly (Incl items 23 and 24) . . . . .	X	1
26	A158-1	Spindle (Ref) . . . . .	O	1
27	A016-2**	Main Rotor Blade (Ref; retired by AD 2004-19-09. Not shown.)		

NOTES \* Stainless steel skin blade; see Figure 99-41 for shipping crate.  
 \*\* Critical part; see R22 Maintenance Manual.

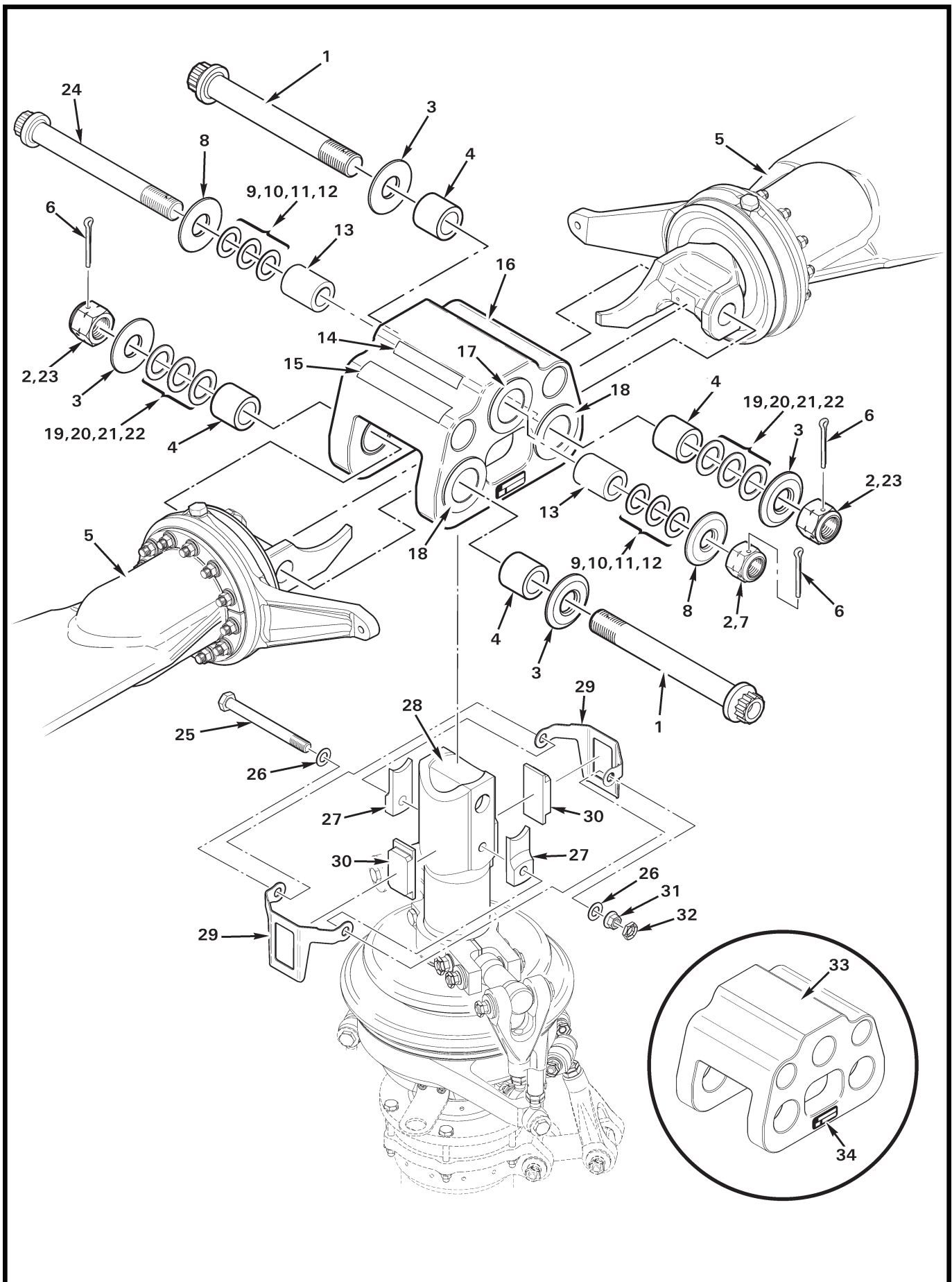


FIGURE AND INDEX NUMBER	PART NUMBER	DESCRIPTION	PARTS AVAIL	QTY PER ASSY
<b>MAIN ROTOR HUB INSTALLATION</b>				
62-5-1	NAS632-82	Bolt (or MS21250-12082) . . . . .	X	2
2	A257-9	Anti-Seize – Loctite Silver Grade . . . . .	X	A/R
3	A152-2	Thrust Washer . . . . .	X	4
4	A106-7	Journal – Bearing (length = 1.005-inch, bore = 0.750-inch) . .	X	4
5	A005-14	Main Rotor Blade and Spindle Assembly (Ref, see Figure 62-1)		
6	MS24665-355	Cotter Pin . . . . .	X	3
7	A189-10	Nut – Double Lock . . . . .	X	1
8	A152-1	Thrust Washer . . . . .	X	2
9	A117-5	Shim – Washer (thickness = 0.012-inch, bore = 0.625-inch)	X	A/R
10	A117-6	Shim – Washer (thickness = 0.015-inch, bore = 0.625-inch)	X	A/R
11	A117-7	Shim – Washer (thickness = 0.020-inch, bore = 0.625-inch)	X	A/R
12	A117-8	Shim – Washer (thickness = 0.025-inch, bore = 0.625-inch)	X	A/R
13	A106-5	Journal – Bearing (length = 1.260-inch, bore = 0.625-inch) . .	X	A/R
14	A654-18	Decal – "LEVEL HERE" . . . . .	X	1
15	G682-26	Decal (coning bolt instructions) . . . . .	X	1
16	A005-12	Hub Assembly (Incl items 14, 15, 17, 18, and 33) . . . . .	X	1
17	A648-3*	Bearing (teeter hinge) . . . . .	X	2
18	A648-2*	Bearing (coning hinges) . . . . .	X	4
19	A117-48	Shim – Washer (thickness = 0.012-inch, bore = 0.755-inch)	X	A/R
20	A117-49	Shim – Washer (thickness = 0.015-inch, bore = 0.755-inch)	X	A/R
21	A117-50	Shim – Washer (thickness = 0.020-inch, bore = 0.755-inch)	X	A/R
22	A117-51	Shim – Washer (thickness = 0.025-inch, bore = 0.755-inch)	X	A/R
23	A189-12	Nut – Double Lock . . . . .	X	2
24	NAS630-80	Bolt (or MS21250-10080) . . . . .	X	1
25	NAS6605-46	Bolt (or NAS1305-46) . . . . .	X	1
26	NAS1149F0516P	Washer . . . . .	X	2
27	A150-1	Droop Stop . . . . .	X	2
28	A251-1	Main Rotor Shaft (Ref)		
29	B226-2	Bracket – Teeter Stop . . . . .	X	2
30	B151-3	Teeter Stop . . . . .	X	2
31	D210-5	Nut . . . . .	X	1
32	B330-16	Palnut . . . . .	X	1
33	B370-1	Hub (Ref; includes item 34) . . . . .	O	1
34	A651-1	Data Plate . . . . .	O	1

NOTES \* Requires MT329 installation tools. See Figure 99-37.

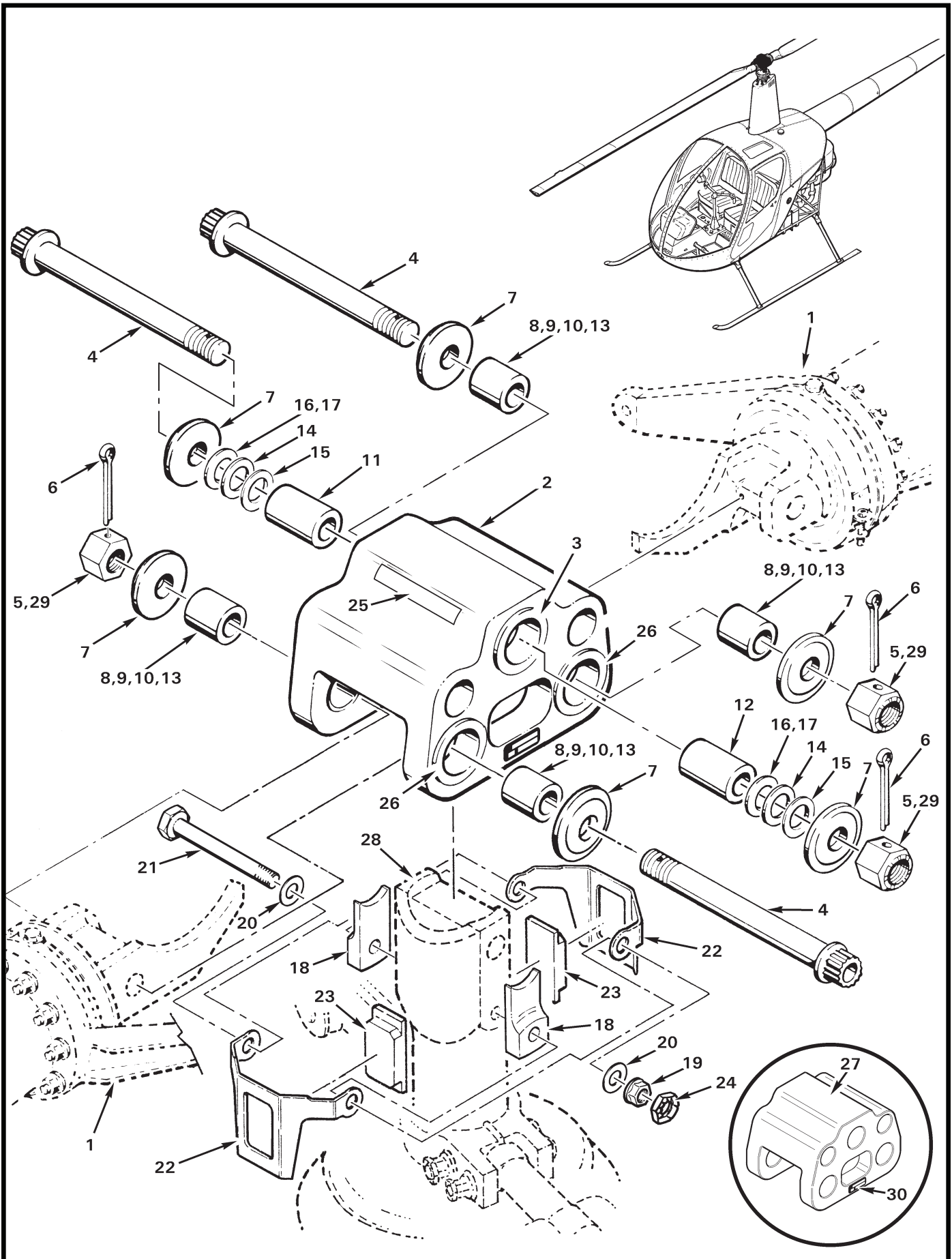




FIGURE AND INDEX NUMBER	PART NUMBER	DESCRIPTION	PARTS AVAIL	QTY PER ASSY
<b>MAIN ROTOR HUB INSTALLATION</b>				
62-7-1	A005-6	Main Rotor Blade and Spindle Assembly (Ref, see Figure 62-1)		
2	A005-4	Hub and Bearings (Incl items 3, 25 thru 27) . . . . .	X	1
3	A648-3*	Bearing (teeter hinge) . . . . .	X	2
4	NAS630-80	Bolt (or MS21250-10-80) . . . . .	X	3
5	A189-10	Nut – Double Lock . . . . .	X	3
6	MS24665-355	Cotter Pin . . . . .	X	3
7	A152-1	Thrust Washer . . . . .	X	6
8	A106-1	Journal – Bearing (length = 1.000-inch) . . . . .	X	A/R
9	A106-2	Journal – Bearing (length = 0.995-inch) . . . . .	X	A/R
10	A106-3	Journal – Bearing (length = 0.990-inch) . . . . .	X	A/R
11	A106-4	Journal – Bearing (length = 1.300-inch) . . . . .	X	A/R
12	A106-5	Journal – Bearing (length = 1.260-inch) . . . . .	X	A/R
13	A106-6	Journal – Bearing (length = 1.005-inch) . . . . .	X	A/R
14	A117-5	Shim – Washer (thickness = 0.012-inch) . . . . .	X	A/R
15	A117-6	Shim – Washer (thickness = 0.015-inch) . . . . .	X	A/R
16	A117-7	Shim – Washer (thickness = 0.020-inch) . . . . .	X	A/R
17	A117-8	Shim – Washer (thickness = 0.025-inch) . . . . .	X	A/R
18	A150-1	Droop Stop . . . . .	X	2
19	MS21042L5	Nut . . . . .	X	1
20	NAS1149F0516P	Washer . . . . .	X	2
21	NAS6605-46	Bolt (or NAS1305-46) . . . . .	X	1
22	B226-2**	Bracket – Teeter Stop . . . . .	X	2
23	B151-3**	Teeter Stop . . . . .	X	2
24	B330-16	Palnut . . . . .	X	1
25	A654-18	Decal – "LEVEL HERE" . . . . .	X	1
26	A648-1*	Bearing (coning hinges) . . . . .	X	4
27	A154-1	Hub (Ref; includes item 30) . . . . .	O	1
28	A251	Main Rotor Shaft (Ref)		
29	A257-9	Anti-Seize – Loctite Silver Grade . . . . .	X	A/R
30	A651-1	Data Plate . . . . .	O	1

NOTES \* Requires MT329 installation tools. See Figure 99-37.  
 \*\* May be used only if A158-1 revision "N" (or subsequent revision) spindles are installed.

Intentionally Blank