

CHAPTER 32
LANDING GEAR

<i>Figure</i>	<i>Title</i>	<i>Page</i>
32-1	Landing Gear Assembly	32.0
32-5	Landing Gear Assembly	32.4
32-9	Fixed Floats – Tube Assemblies Installation	32.8

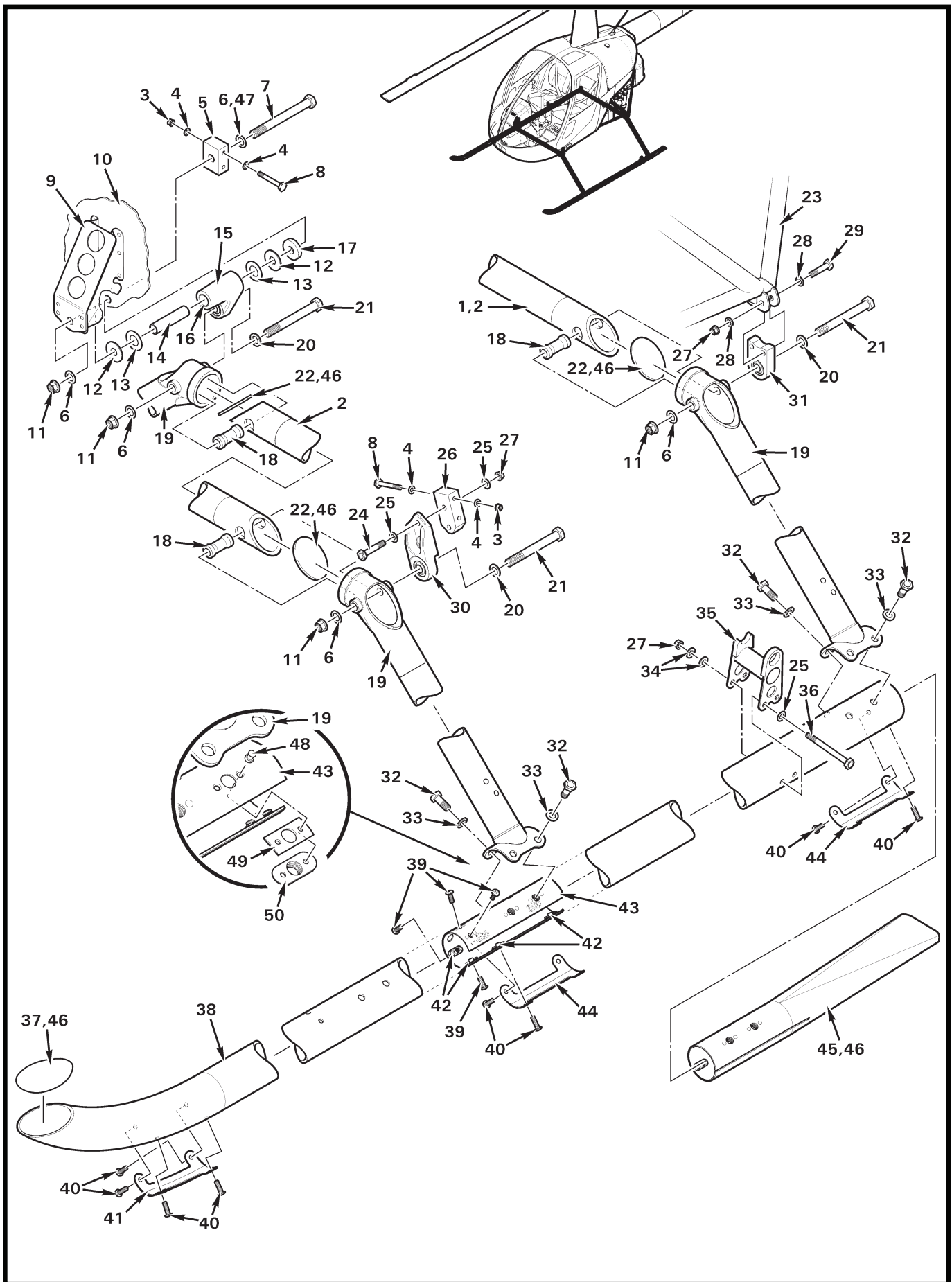


FIGURE AND INDEX NUMBER	PART NUMBER	DESCRIPTION	PARTS AVAIL	QTY PER ASSY
LANDING GEAR ASSEMBLY				
32-1-1	A014-19	Landing Gear Assembly (Incl items 2, 18, 19, 25, 27, 32 thru 36, 38 and 45)	X	1
2	A241-3	Cross Tube (Incl item 22 [2 each])	X	2
3	D210-3	Nut	X	4
4	NAS620-10L	Washer	X	8
5	A354-2	Block	X	1
6	NAS1149F0632P	Washer	X	6
7	NAS6606-49	Bolt (or NAS6606-50)	X	1
8	NAS6603-18	Bolt	X	4
9	A391-1	Doubler (Ref)		
10	A350-4	Panel – RH (Ref)		
11	D210-6	Nut	X	5
12	A214-2	Washer	X	2
13	A214-9	Thrust Washer	X	2
14	A105-4	Journal	X	1
15	A014-5	Shackle Assembly	X	1
16	LJS-0816	Bearing	X	2
17	A141-9	Washer	X	1
18	A243-6	Spacer	X	4
19	A239-4	Strut Assembly	X	4
20	A141-23	Washer	X	8
21	NAS6606-42	Bolt (or NAS1306-42)	X	4
22	A247-3	Rain Cap (install using item 46)	X	4
23	A046-1	Frame Assembly – Lower (LH; Ref, see Figure 53-9)		
	A046-2	Frame Assembly – Lower (RH; Ref, see Figure 53-9)		
24	NAS6604-15	Bolt	X	2
25	NAS1149F0432P	Washer	X	5
26	A354-1	Block (Ref)		
27	D210-4	Nut	X	9
28	A141-11	Washer	X	8
29	NAS6604-11	Bolt	X	4
30	A014-6	Support Assembly (forward)	X	1
31	A574-2	Support Assembly (aft)	X	2
32	NAS6605-5	Bolt (or NAS1305-5)	X	16
33	NAS1149F0563P	Washer	X	16

NOTES

Continues

FIGURE AND INDEX NUMBER	PART NUMBER	DESCRIPTION	PARTS AVAIL	QTY PER ASSY
LANDING GEAR ASSEMBLY (Cont'd)				
32-1-34	NAS1149F0463P	Washer	X	4
35	A719-1	Support Weldment – Ground Handling Wheel	X	2
36	AN4-25A	Bolt	X	2
37	A247-1	Rain Cap (install using item 46)	X	1
38	A014-11	Skid Tube Assembly (LH; includes A242-3, and items 37, 39 thru 41, 43, 44, and 46)	X	1
	A014-12	Skid Tube Assembly (RH; includes A242-4, and items 37, 39 thru 41, 43, 44, and 46)	X	1
	A242-3	Skid Tube (LH)	O	1
	A242-4	Skid Tube (RH)	O	1
39	A142-3	Screw ([4] each side)	X	8
40	A142-1	Screw	X	12
41	A667-6	Skid Shoe – Curved	X	2
42	MS21075L3E	Nutplate	X	8
43	A246-5	Liner (LH, includes item 42, 48 thru 50)	X	1
	A246-6	Liner (RH, includes item 42, 48 thru 50)	X	1
	A246-1	Liner (no longer available)	O	2
44	A667-5	Skid Shoe – Straight	X	2
45	A937-1	Extension (LH)	X	1
	A937-2	Extension (RH)	X	1
46	B270-1	Adhesive	X	A/R
47	NAS1149F0663P	Washer (as required for 2-4 exposed threads)	X	A/R
48	NAS1097AD4	Rivet	X	8
49	A246-3	Spacer	X	4
50	MS21075L5E	Nutplate	X	4

NOTES

Intentionally Blank

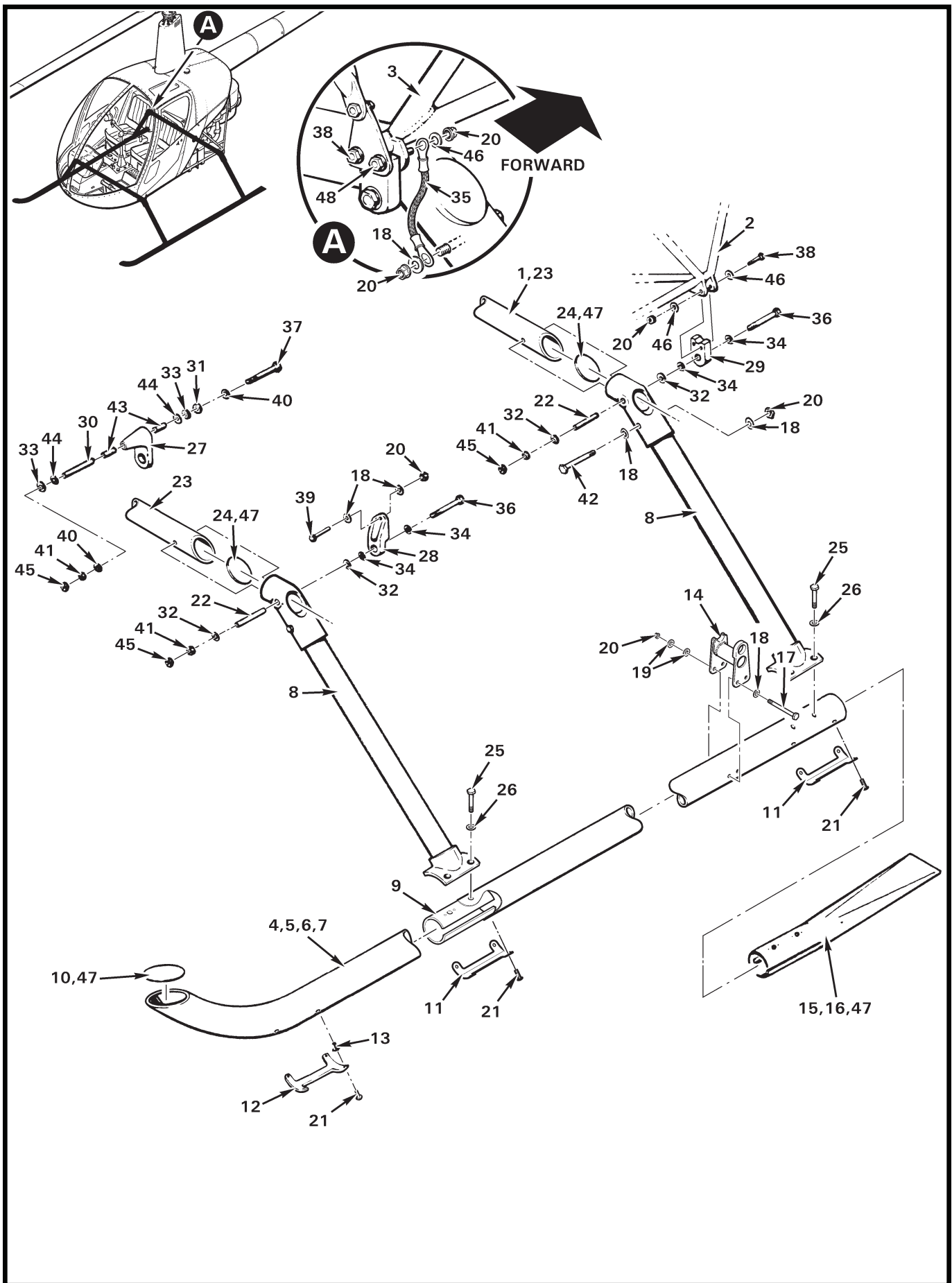


FIGURE AND INDEX NUMBER	PART NUMBER	DESCRIPTION	PARTS AVAIL	QTY PER ASSY
LANDING GEAR ASSEMBLY				
32-5-1	A014-8	Landing Gear Assembly (Incl items 4, 5, 8, 14 thru 20, 22, 23, 25, 26, and 42)	X	1
2	A046-1	Frame Assembly – Lower (LH; Ref, see Figure 53-9)		
3	A046-2	Frame Assembly – Lower (RH; Ref, see Figure 53-9)		
4	A014-11	Skid Tube Assembly (LH, revision AI and prior. No longer available; to replace order [1] A014-11 revision AJ and subsequent. See Figure 32-1.)	O	1
5	A014-12	Skid Tube Assembly (RH, revision AI and prior. No longer available; to replace order [1] A014-12 revision AJ and subsequent. See Figure 32-1.)	O	1
6	A242-1	Skid Tube (LH, revision T and prior. See Figure 32-1.)	O	1
7	A242-2	Skid Tube (RH, revision T and prior. See Figure 32-1.)	O	1
8	A014-18	Strut Assembly (No longer available; to replace order [2] A239-4 strut assemblies, and [1] A241-3 cross tube and associated hardware. See Figure 32-1.)	O	4
9	A246-1	Liner (superseded by item 51)	O	2
10	A247-1	Rain Cap (bond in place using item 47)	X	1
11	A667-5	Skid Shoe – Straight	X	2
12	A667-6	Skid Shoe – Curved	X	1
13	NAS1330H3K116L	Rivnut	X	4
14	A719-1	Support Assembly – Ground Handling Wheel	X	2
15	A937-1	Extension (LH, seal gaps with item 47)	X	1
16	A937-2	Extension (RH, seal gaps with item 47)	X	1
17	AN4-25A	Bolt	X	2
18	NAS1149F0432P	Washer	X	10
19	NAS1149F0463P	Washer	X	4
20	D210-4	Nut	X	5
21	A142-1	Screw	X	12
22	A278-1	Spacer (2.030–2.035 inches long)	X	4
23	A241-2	Cross Tube (Incl item 24 [2])	X	2
24	A247-3	Rain Cap (bond in place using item 47)	X	4
25	NAS6605-5	Bolt	X	16
26	NAS1149F0563P	Washer	X	16
27	A014-5	Shackle Assembly	X	1
28	A014-6	Support Assembly (forward)	X	1
29	A014-7	Support Assembly (aft)	X	2
30	A105-4	Journal	X	1

NOTES

Continues

FIGURE AND INDEX NUMBER	PART NUMBER	DESCRIPTION	PARTS AVAIL	QTY PER ASSY
LANDING GEAR ASSEMBLY (Cont'd)				
32-5-31	A141-9	Washer	X	1
32	A214-1	Washer	X	8
33	A214-2	Washer	X	2
34	A141-23	Washer	X	8
35	A936-2	Ground Wire Assembly	X	1
36	NAS6606-42	Bolt	X	4
37	NAS6606-50	Bolt	X	1
38	NAS6604-11	Bolt	X	3
39	NAS6604-15	Bolt	X	2
40	NAS1149F0632P	Washer	X	2
41	D210-6	Nut	X	5
42	NAS6604-32	Bolt	X	4
43	LJS-0816	Bearing	X	2
44	A214-9	Thrust Washer	X	2
45	B330-19	Palnut	X	5
46	A141-11	Washer	X	8
47	B270-1	Adhesive	X	A/R
48	NAS6604-12	Bolt (right outboard position only)	X	1

NOTES

Intentionally Blank

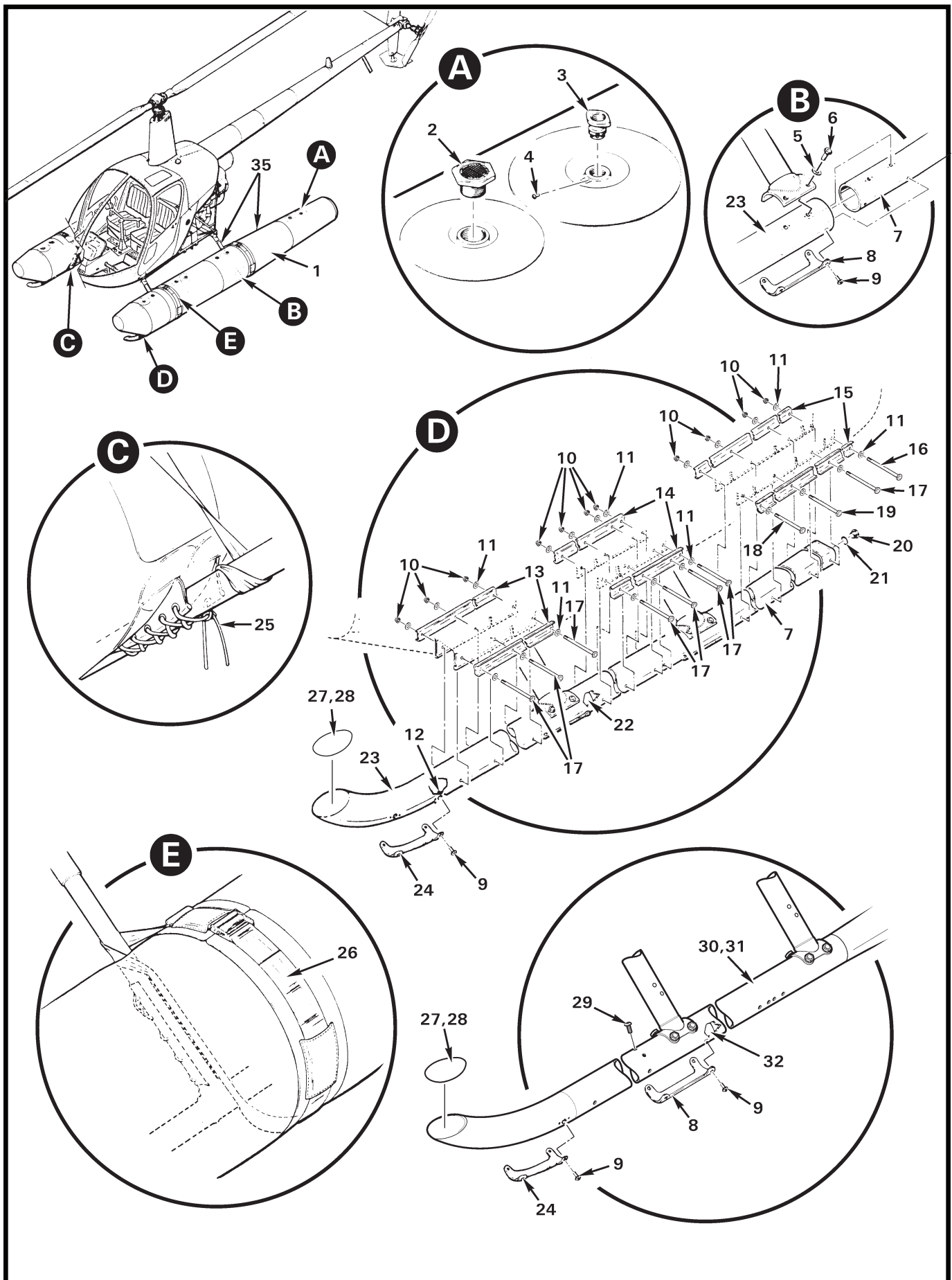


FIGURE AND INDEX NUMBER	PART NUMBER	DESCRIPTION	PARTS AVAIL	QTY PER ASSY
		FIXED FLOATS – TUBE ASSEMBLIES INSTALLATION		
32-9-1	A949-1 *	Float Tube Assembly* (LH, black. Includes items 2, 3, 25, and 26.)	X	1
	A949-2 *	Float Tube Assembly* (RH, black. Includes items 2, 3, 25, and 26.)	X	1
2	3MA1009-4	Pressure Relief Valve	X	4
3	4RA1190-2	Hand Pump Fitting (Incl item 4)	X	4
4	—	Screw	O	4
5	NAS1149F0563P**	Washer	X	8
6	NAS6605-5**	Bolt	X	8
7	A945-1	Skid Extension (LH)	X	1
	A945-2	Skid Extension (RH)	X	1
8	A667-5	Skid Shoe – Straight	X	2
9	A142-1	Screw	X	12
10	D210-4***	Nut	X	26
11	NAS1149F0432P	Washer	X	56
12	NAS1330H3K116L	Rivnut	X	4
13	A944-2	Strip	X	2
14	A944-1	Strip (LH)	X	1
	A944-4	Strip (RH)	X	1
15	A944-3	Strip (LH and RH)	X	2
16	NAS6604-34***	Bolt	X	1
17	NAS6604-32***	Bolt	X	20
18	NAS6604-28***	Bolt	X	5
19	NAS6604-30***	Bolt	X	2
20	B202-1	Drain Plug Assembly (Incl item 21)	X	1
21	A215-013	O-Ring	X	1
22	A246-1	Liner (no longer available; see item 32)	O	2
23	A014-15	Skid Tube (LH, revision A1 and prior. See item 30)	O	1
	A242-1	Skid Tube (LH; see item 31)	O	1
	A014-16	Skid Tube (RH, revision A1 and prior. See item 30)	O	1
	A242-2	Skid Tube (RH; see item 31)	O	1
24	A667-6	Skid Shoe – Curved	X	1
25	—	Lacing	O	2
26	—	Restraint Belt	O	2
27	A247-1	Rain Cap (bond in place using item 28)	X	1

NOTES * Top half painted white; specify B900-6 component modification when ordering.
 ** Cover bolt head and washer with item 28.
 *** Seal under head and nut with item 28.

Continues

FIGURE AND INDEX NUMBER	PART NUMBER	DESCRIPTION	PARTS AVAIL	QTY PER ASSY
FIXED FLOATS – TUBE ASSEMBLIES INSTALLATION (Cont'd)				
32-9-28	B270-1	Sealant	X	A/R
29	A142-3	Screw (revision AJ and subsequent)	X	4
30	A014-15	Skid Tube Assembly (LH, revision AJ and subsequent; includes items 8, 9, 12, 24, 27, 29, 31 and 32)	X	1
	A014-16	Skid Tube Assembly (RH, revision AJ and subsequent; includes items 8, 9, 12, 24, 27, 29, 31 and 32)	X	1
31	A943-5	Skid Tube (LH, revision U and subsequent. See item 30.) . . .	O	1
	A943-6	Skid Tube (RH, revision U and subsequent. See item 30.) . . .	O	1
32	A246-5	Liner (LH; revision AJ and subsequent)	X	1
	A246-6	Liner (RH; revision AJ and subsequent)	X	1
33	MT340-1	Float Gauge and Fill Gun Kit (not shown)	X	1
34	KI-83-1	Float Repair Kit (not shown)	X	1
35	A034-1	Float Landing Gear Assembly (Incl items 1 thru 27)	X	1

NOTES