

CHAPTER 16
SPECIAL TOOLS

<u>Section</u>	<u>Title</u>	<u>Page</u>
16.000	Special Tools	16.1

Intentionally Blank

SECTION 16

SPECIAL TOOLS

16.000 SPECIAL TOOLS

16.001 Introduction

The following section contains a list of special tools available from Robinson Helicopter for use with the procedures in this manual to properly maintain the R44 helicopter.

16.100 TOOL LIST

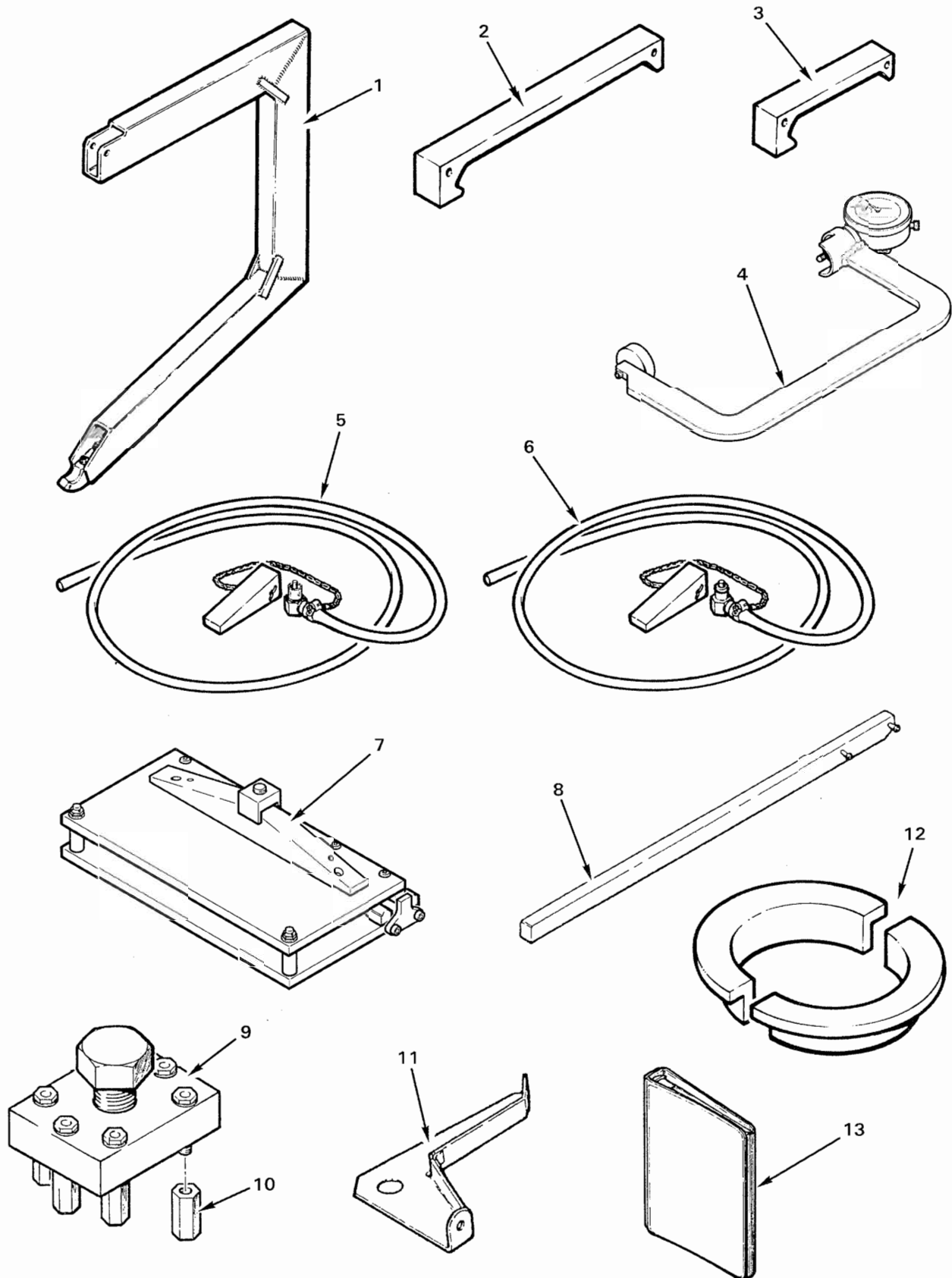
- 1) MT548-1 Engine Hoist
- 2) MT525-1 Main Rotor Rigging Fixture
- 3) MT525-2 Tail Rotor Rigging Fixture
- 4) MT122-6 Main Rotor Hub Bolt Stretch Measuring Tool
- 5) MT053-1 Main Rotor Gearbox Drain Valve Tool (for old-style A7260 chip detector)
- 6) MT054-1 Main Rotor Gearbox Drain Valve Tool (for B7260 "quick release" chip detector)
- 7) MT526-1 Main Rotor Blade Trim Tab Bender
- 8) MT091-1 Engine Ring Gear Holder
- 9) MT592-1 Fan Puller (incl item 10)
- 10) MT092-3 Spacer
- 11) MT121-1 Bracket - Magnetic Pickup
- 12) MT146-2 Blocks - Swashplate Rigging (set of 2 blocks; use with C198-1 swashplate, use MT146-3 with C198-2 swashplate)
- 13) 60297-10 Engine Operator's Manual (Lycoming part no.)
- 14) MT173-5 Torque Wrench Extension Tool Set - Fan Nut (R22 and R44; includes items 15 thru 19)
- 15) MT173-6 Torque Wrench Welded Assembly
- 16) 9HT4441* Extension Bar (3/4" drive, 8-in. length)
- 17) MT173-7 Socket (3/4" drive, 1-1/2" 12 pt. 9-47782*)
- 18) MT173-4 Socket (3/4" drive, 1-11/16" 12 pt. 9-47784*)
- 19) MT173-8 Socket (3/4" drive, 2" 12 pt. 9-47788*)
- 20) MT147-1 Air Bleed Tools - Main Rotor Spindle
- 21) MT252-1 Bearing Pressing Tool - Tail Rotor Hub
- 22) MT549-2 Flat Plate
- 23) MT549-1 Spacer - Spindle Boot Adjustment
- 24) MT527-1 Helicopter Lifting Fixture
- 25) MT527-5 Bushing

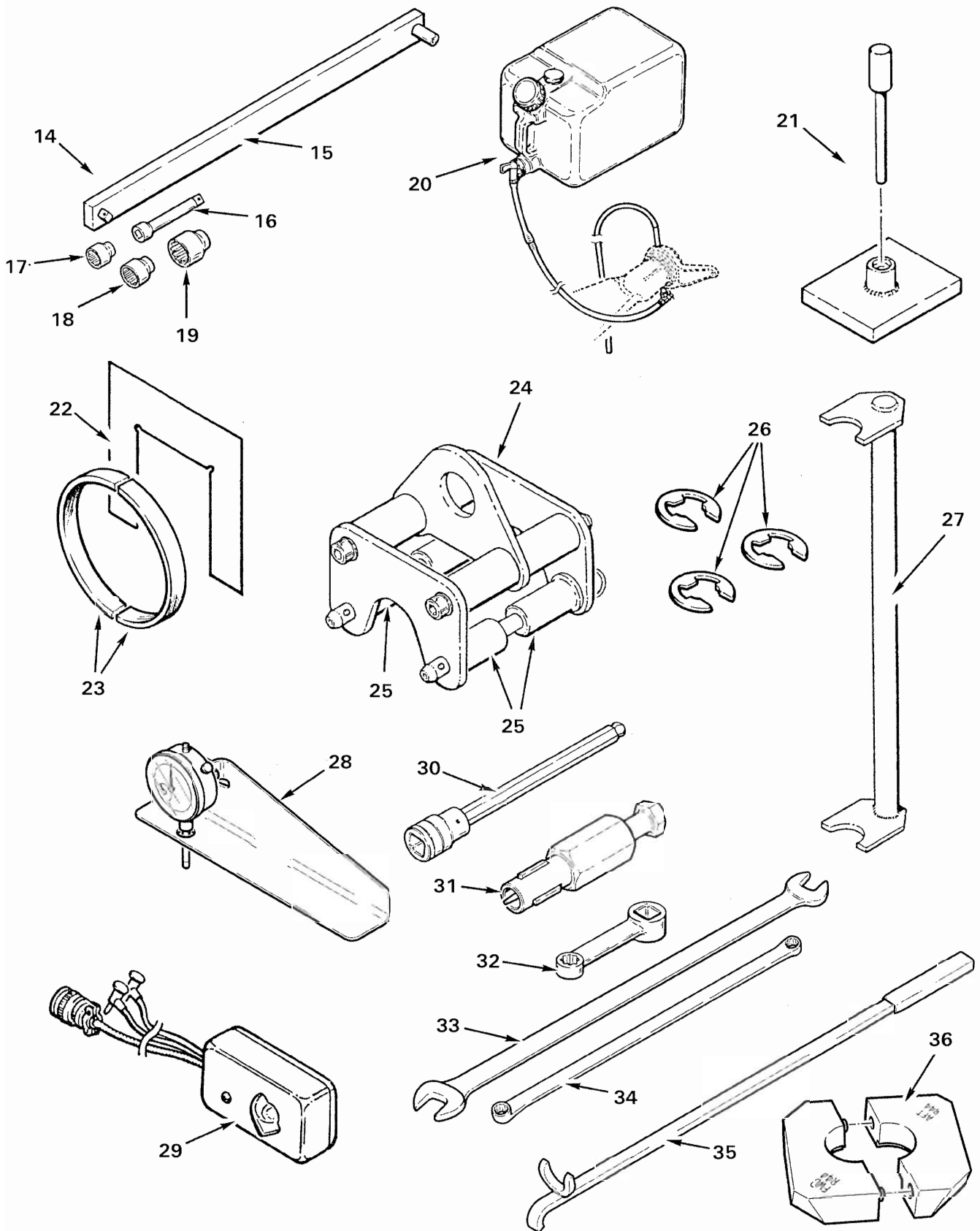
*Sears/Craftsman part no.

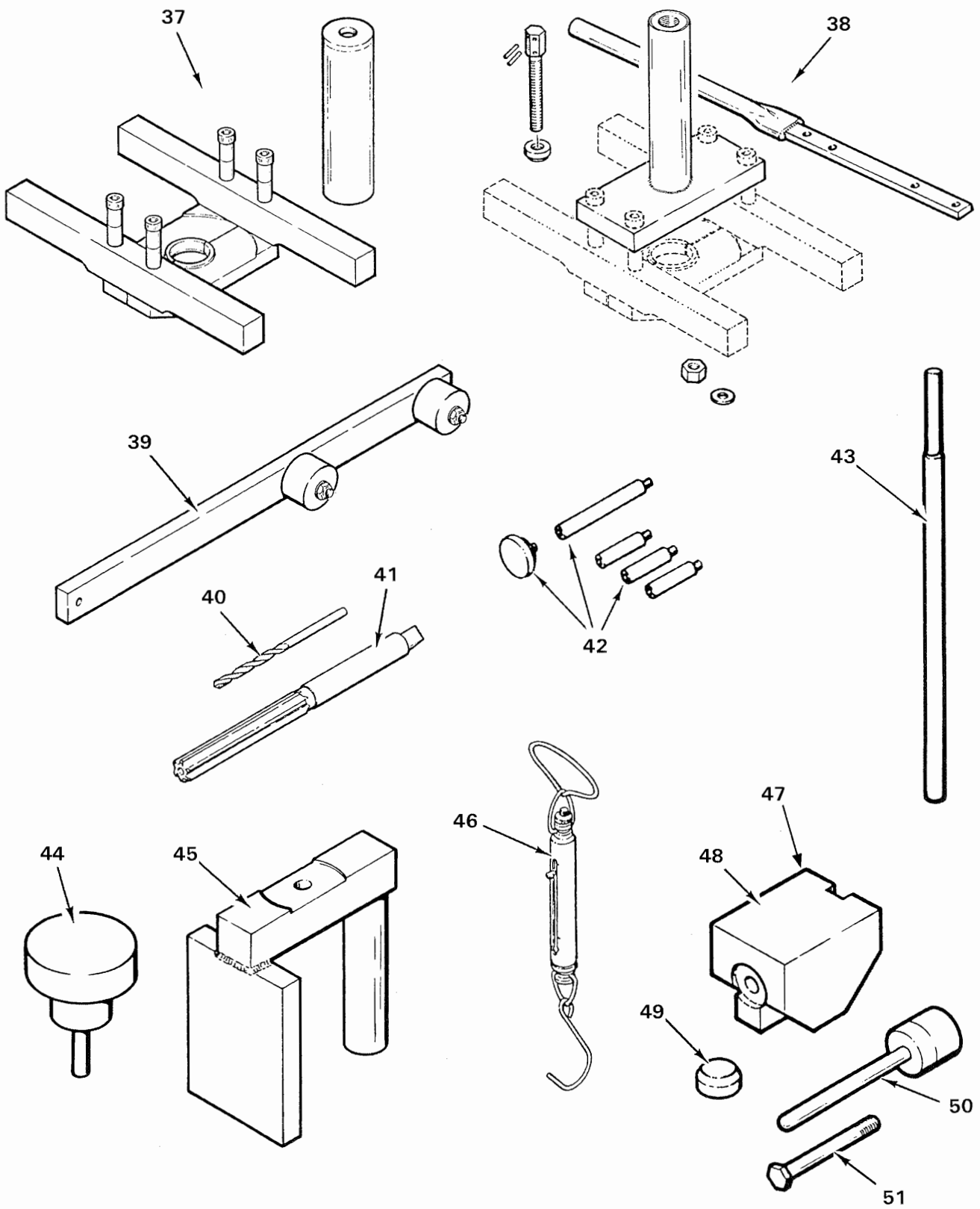
- 26) MS16633-2018 Retaining Ring (3 required for removal or installation of C038 collective spring assembly)
- 27) MT544-2 Spring Retainer - Trim
- 28) MT352-1 Main Rotor Blade Trim Tab Gage
- 29) MT547-1 Cyclic Trim Set-up Box
- 30) MT357-4 Hex Driver (Snap-on part no. FABL8)
- 31) MT357-8 Nipple Chuck
- 32) MT357-5 Torque Adapter (Snap-on part no. FRDH101)
- 33) MT357-6 Wrench - Open End (3/8" & 7/16"; 44475*)
- 34) MT357-7 Wrench - Box End (7/32" & 1/4"; XDH78A**)
- 35) MT516-1 Valve Spring Compressor Tool
- 36) MT559-1 Blocks - Main Rotor Rigging (set of 2 blocks; holds cyclic stick in neutral position)
- 37) MT528-1 Clutch Bearing (C184) Removal/Installation Tool (For use with hydraulic press)
- 38) MT528-2 Clutch Bearing (C184) Removal/Installation Tool (For use when hydraulic press is not available)
- 39) MT354-4 Teeter Moment Tool
- 40) MT357-3 0.156 in. dia. Cobalt Steel Drill Bit
- 41) MT357-2 0.375 in. dia. Reamer
- 42) MT260-6 Tail Rotor Drive Shaft Runout Indicator Kit
- 43) MT331-4 Sheave Alignment Bar
- 44) MT329-6 Plug (hub bearing installation)
- 45) MT643-1 Support (hub bearing installation)
- 46) MT359-1 Spring Scale
- 47) MT556-11 Support Tail Rotor Elastomeric Bearing Removal/Installation Tool (includes items 46 thru 49)
- 48) MT556-15 Support
- 49) MT556-16 Cap
- 50) MT556-12 Mandrel Assembly
- 51) AN6-34A Bolt
- 52) MT133-1 Parallel Valve Tool Assembly (O-320, O-360, & O-540 engines; not shown)
- 53) MT133-5 Angle Valve Tool Assembly (IO-540 engines; not shown)
- 54) MT133-9 Adapter (for measuring valve wiggle; not shown)
- 55) MT384-1 Hydraulic Pump Assembly (115V, 60Hz for USA, Canada and Mexico; not shown)
- 56) MT348-2 Hydraulic Pump Assembly (220V, 50Hz for outside North America; not shown)

* Sears/Craftsman part no.

** Snap-on part no.







Intentionally blank