

CHAPTER 62

MAIN ROTOR

<i>Figure</i>	<i>Title</i>	<i>Page</i>
62-1	Main Rotor Blade Assembly	62.0
62-3	Main Rotor Hub	62.2
62-5	Swashplate Assembly	62.4
62-9	Swashplate Ball Installation	62.8

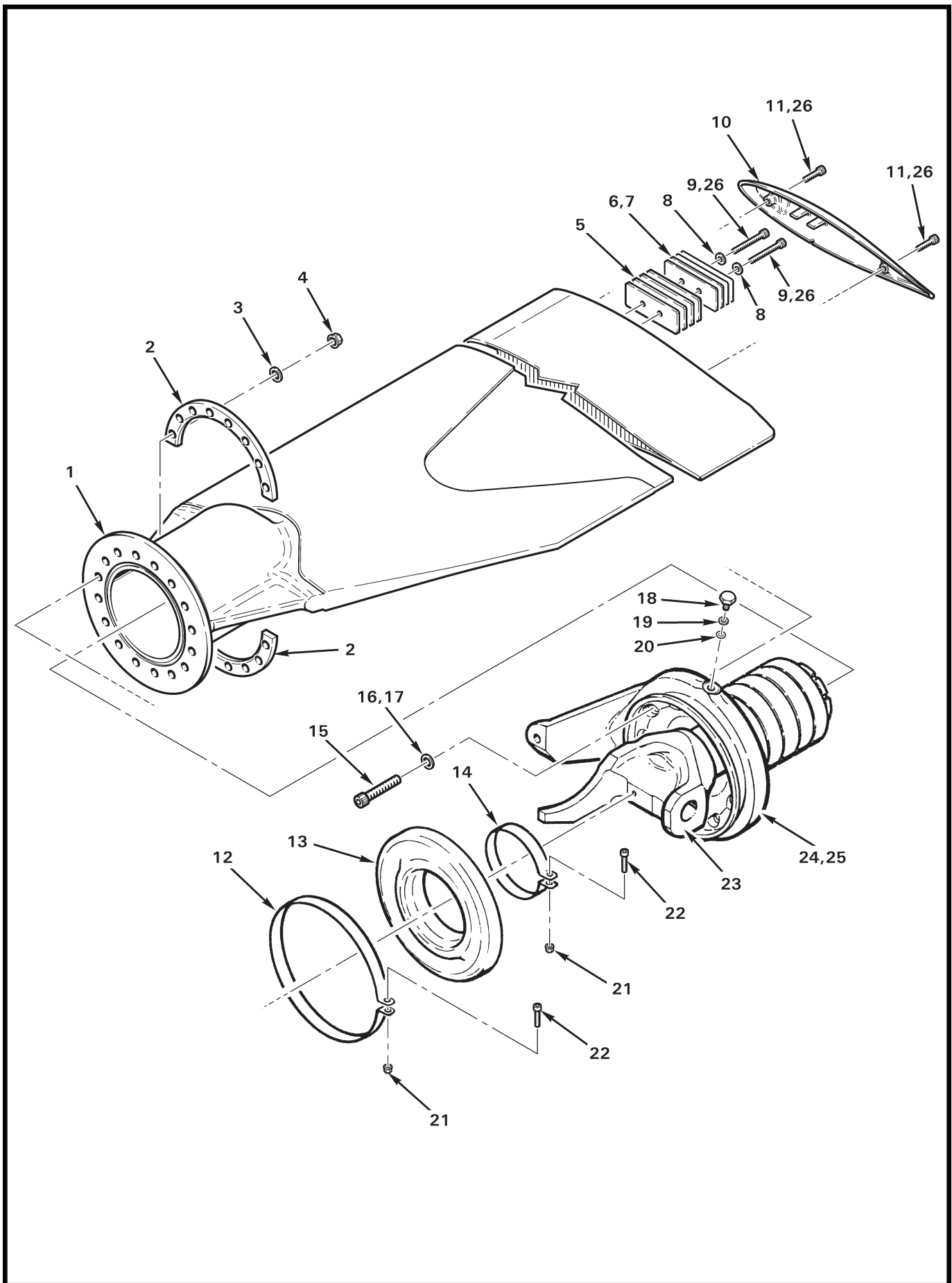


FIGURE AND INDEX NUMBER	PART NUMBER	DESCRIPTION	PARTS AVAIL	QTY PER ASSY
MAIN ROTOR BLADE ASSEMBLY*				
62-1-1	C005-13	Main Rotor Blade and Spindle Assembly – Extended Tab (Incl items 2 thru 4, 15 thru 18, 24, and 25)	X	2
	C005-13R	Main Rotor Blade and Spindle Assembly (Two blade set, overhaul exchange; R9648 core deposit req'd. Includes shipping crate.)	X	1
	F016-2**	Blade Assembly	O	1
2	C253-2	Spacer	O	2
3	NAS1149F0563P	Washer	X	16
4	D210-5	Nut	X	16
5	C298-4	Balance Strip (0.125 in. thick steel)	X	A/R
6	C298-2	Balance Strip (0.040 in. thick steel)	X	A/R
7	C298-3	Balance Strip (0.032 in. thick steel)	X	A/R
8	NAS1149F0332P	Washer (or NAS1149F0363P A/R for balance)	X	A/R
9	A722-4	Screw (installed wet using item 26; see MM for special torque)	X	2
10	F300-1	Tip Cover (round)	X	1
11	NAS1351N3-12P	Screw (installed wet using item 26; see MM for special torque)	X	2
12	C165-2	Clamp Assembly (Incl items 21 and 22)	X	1
13	C156-1	Boot (standard, black)	X	1
	C156-2	Boot (optional for sub-freezing operations, gray)	X	1
14	C165-1	Clamp Assembly (Incl items 21 and 22)	X	1
15	C722-1	Screw	O	16
16	NAS1149F0563P	Washer	X	16
17	B270-1	Sealant (2-oz. tube)	X	A/R
18	B289-2	Bolt (Incl items 19 and 20)	X	2
19	—	Washer	O	1
20	A215-902	O-Ring	X	1
21	MS21042L08	Nut	X	2
22	NAS1352-08-12P	Screw	X	2
23	C158-1	Spindle (Ref)		
24	C005-14	Spindle Assembly (Incl items 12 thru 14, and 23)	O	1
25	A257-4	Oil (to fill blade housing)	X	A/R
26	A257-9	Anti-seize	X	A/R

NOTES * See Figure 99-21 for shipping crate.
 ** Critical part; see R66 MM § 1-60.

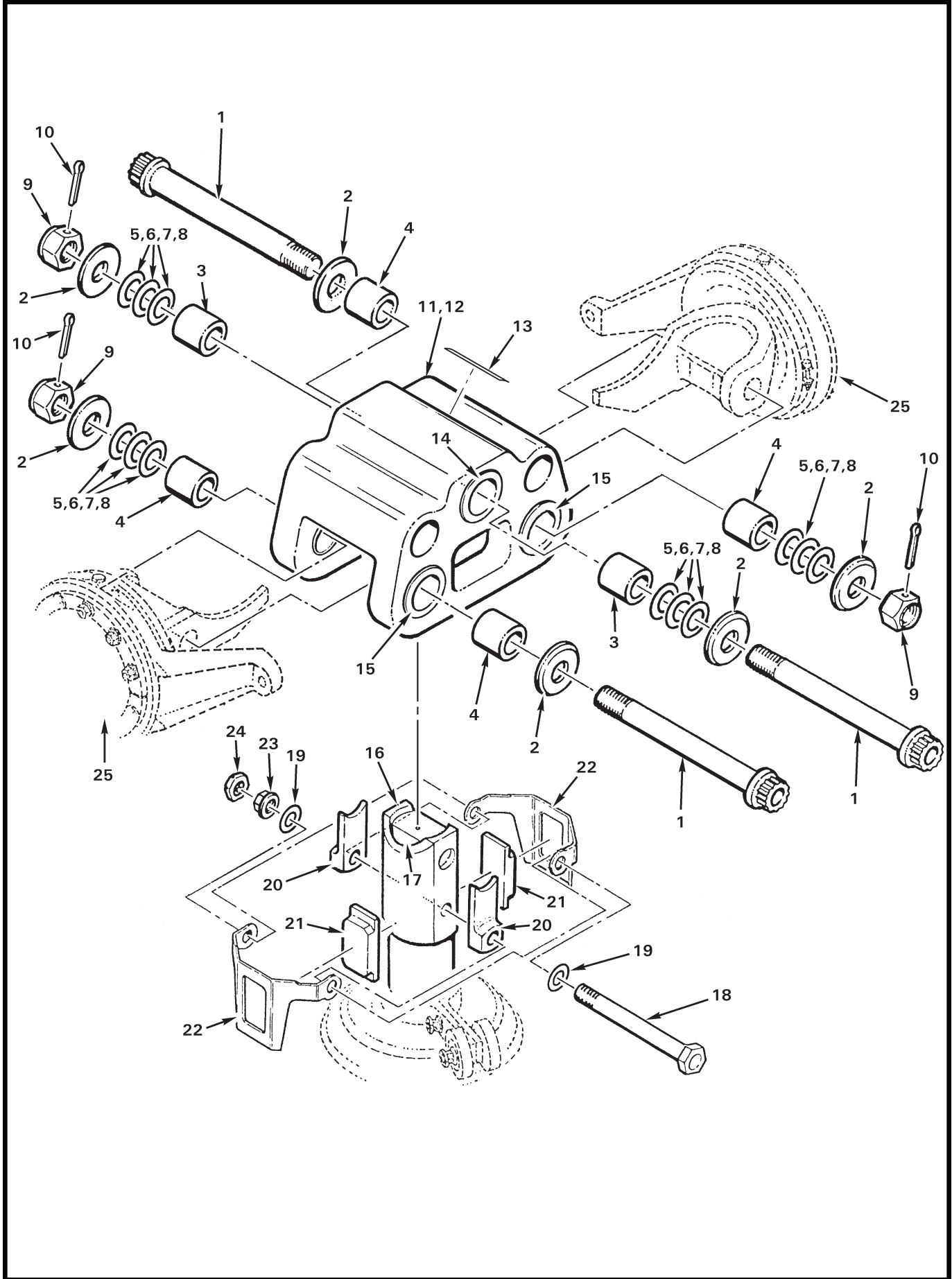


FIGURE AND INDEX NUMBER	PART NUMBER	DESCRIPTION	PARTS AVAIL	QTY PER ASSY
MAIN ROTOR HUB				
62-3-1	NAS634-105	Bolt (install using item 26 on threads)	X	3
2	C152-1	Thrust Washer	X	6
3	C106-5	Journal-Bearing (length = 1.775 in.)	X	2
4	C106-7	Journal-Bearing (length = 1.284 in.)	X	4
5	C117-8	Shim-Washer (thickness = 0.012 in.)	X	A/R
6	C117-9	Shim-Washer (thickness = 0.015 in.)	X	A/R
7	C117-10	Shim-Washer (thickness = 0.020 in.)	X	A/R
8	C117-11	Shim-Washer (thickness = 0.025 in.)	X	A/R
9	C189-14	Nut	X	3
10	MS24665-423	Cotter Pin	X	3
11	C005-4	Hub Assembly (Incl items 12 thru 15)	X	1
12	C154-1	Hub (Ref, does not include C648 bearings)		
13	A654-18	Decal "LEVEL HERE"	X	1
14	C648-3*	Bearing (teeter)	X	2
15	C648-1*	Bearing (coning)	X	4
16	C251-3	Shaft – Main Rotor (Ref; see Figure 63-3)		
17	C252-1	Spacer – Main Rotor Hub (Ref)		
18	NAS6608-60	Bolt	X	1
19	NAS1149F0832P	Washer	X	2
20	C150-1	Droop Stop	X	2
21	D151-2	Stop (Replaces D151-1. Use only with D226-2 bracket.)	X	2
22	D226-2	Bracket (Replaces D226-1. Use only with D151-2 stop.)	X	2
23	D210-8	Nut (install using item 26 on threads)	X	1
24	B330-24	Palnut	X	1
25	C005-13	Blade and Spindle Assembly (Ref, see Figure 62-1)		
26	A257-9	Anti-seize	X	A/R

NOTES * Requires MT329-6 and MT643-1 tools for bearing replacement.

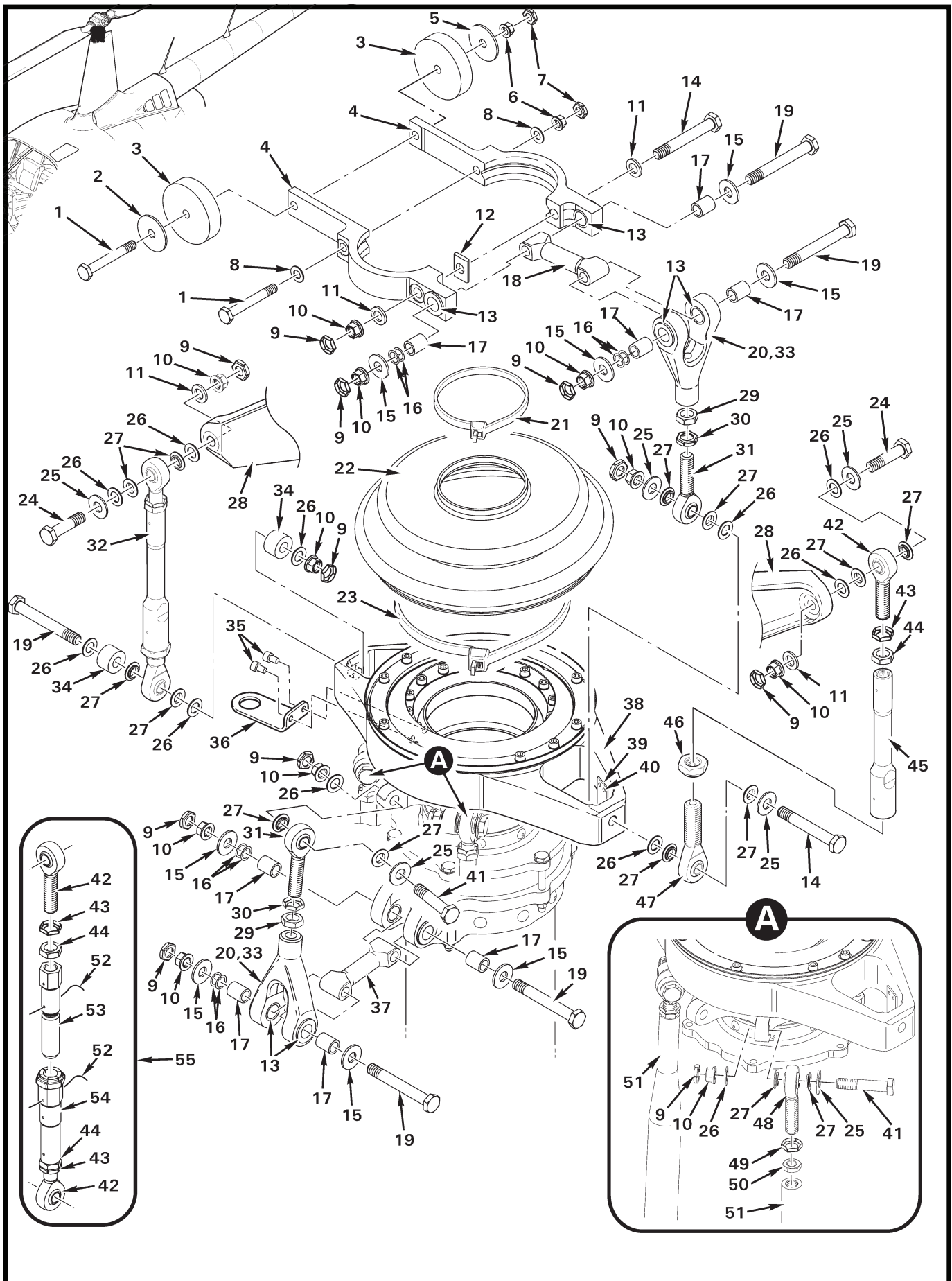


FIGURE AND INDEX NUMBER	PART NUMBER	DESCRIPTION	PARTS AVAIL	QTY PER ASSY
SWASHPLATE ASSEMBLY				
62-5-1	NAS6604-24*	Bolt	X	2
2	AN970-4	Washer (A/R for balance)	X	A/R
3	A255-1 or A255-2	Counter Weight (1.10 in O.D.) Counter Weight (1.90 in O.D.)	X X	A/R A/R
4	C203-5	Yoke Assembly (Incl item 13)	X	2
5	NAS1149F0432P	Washer (or NAS1149F0463P as required for correct nut engagement)	X	A/R
6	D210-4	Nut	X	2
7	B330-13	Palnut	X	2
8	NAS1149F0432P	Washer	X	2
9	B330-16	Palnut	X	11
10	D210-5	Nut	X	13
11	NAS1149F0563P	Washer	X	2
12	A210-1	Key	X	1
13	C648-2	Bearing – Journal (install wet; see R66 MM § 20-60 for approved primer)	X	8
14	NAS6605-28	Bolt	X	2
15	C141-19	Washer	X	8
16	C117-67 C117-68 C117-69	Shim (thickness = 0.016 in.) Shim (thickness = 0.020 in.) Shim (thickness = 0.025 in.)	X X X	A/R A/R A/R
17	C105-6	Journal (length = 0.526 in.)	X	8
18	C204-3	Arm (upper)	X	1
19	NAS6605-31	Bolt	X	5
20	A205-7	Fork Assembly (Incl item 13)	X	2
21	MS3367-7-9	Ty-rap	X	1
22	C480-1	Boot	X	1
23	MS3367-6-0	Ty-rap	X	1
24	NAS6605-18	Bolt	X	2
25	C141-1	Washer	X	6
26	NAS1149F0532P	Washer	X	9
27	C115-1	Spacer	X	14
28	C005-13	Blade and Spindle Assembly – Main Rotor (Ref)		
29	AN316-6R	Nut	X	2
30	B330-19	Palnut	X	2

NOTES * Select bolt length which, after correct torque is applied, exposes 2 to 4 threads beyond nut.

Continues

FIGURE AND INDEX NUMBER	PART NUMBER	DESCRIPTION	PARTS AVAIL	QTY PER ASSY
SWASHPLATE ASSEMBLY (Cont'd)				
62-5-31	D173-3	Rod End	X	2
32	C258-5	Pitch Link Assembly (incl items 42 thru 47)	X	2
33	B270-13	Sealant (to fill cavity in item 20)	X	A/R
34	A255-3	Counter Weight	X	2
35	NAS1352N08-4	Screw	X	2
36	B769-2	Bracket	X	1
37	C204-2	Arm (lower)	X	1
38	C017-6	Swashplate Assembly (Incl items 35, 36, 39, and 40)	X	1
39	C769-2	Interrupter	X	1
40	MS20470AD3	Rivet	X	2
41	NAS6605-17	Bolt	X	4
42	D173-3*	Rod End	X	1
43	B330-19	Palnut	X	1
44	AN316-6R	Nut	X	1
45	C258-6	Barrel Assembly	X	2
46	21FKF-813	Nut	X	1
47	D173-4	Rod End	X	1
48	D173-2	Rod End (Ref)		
49	B330-19	Palnut (Ref)		
50	AN316-6R	Nut (Ref)		
51	F121-3	Push-Pull Tube Assembly (Ref, includes items 48 thru 50. See also Figure 67-27.)		
52	MS20995C32	0.032 in. dia Safety Wire	X	A/R
53	C258-2*	Fitting	X	1
54	C258-4*	Link Assembly (Incl items 42 thru 44)	X	1
55	C258-1	Pitch Link Assembly (Incl items 42 thru 44, 53, and 54)	X	2

NOTES * Coat all threads with A257-2 or A257-22 oil before assembly.

Intentionally Blank

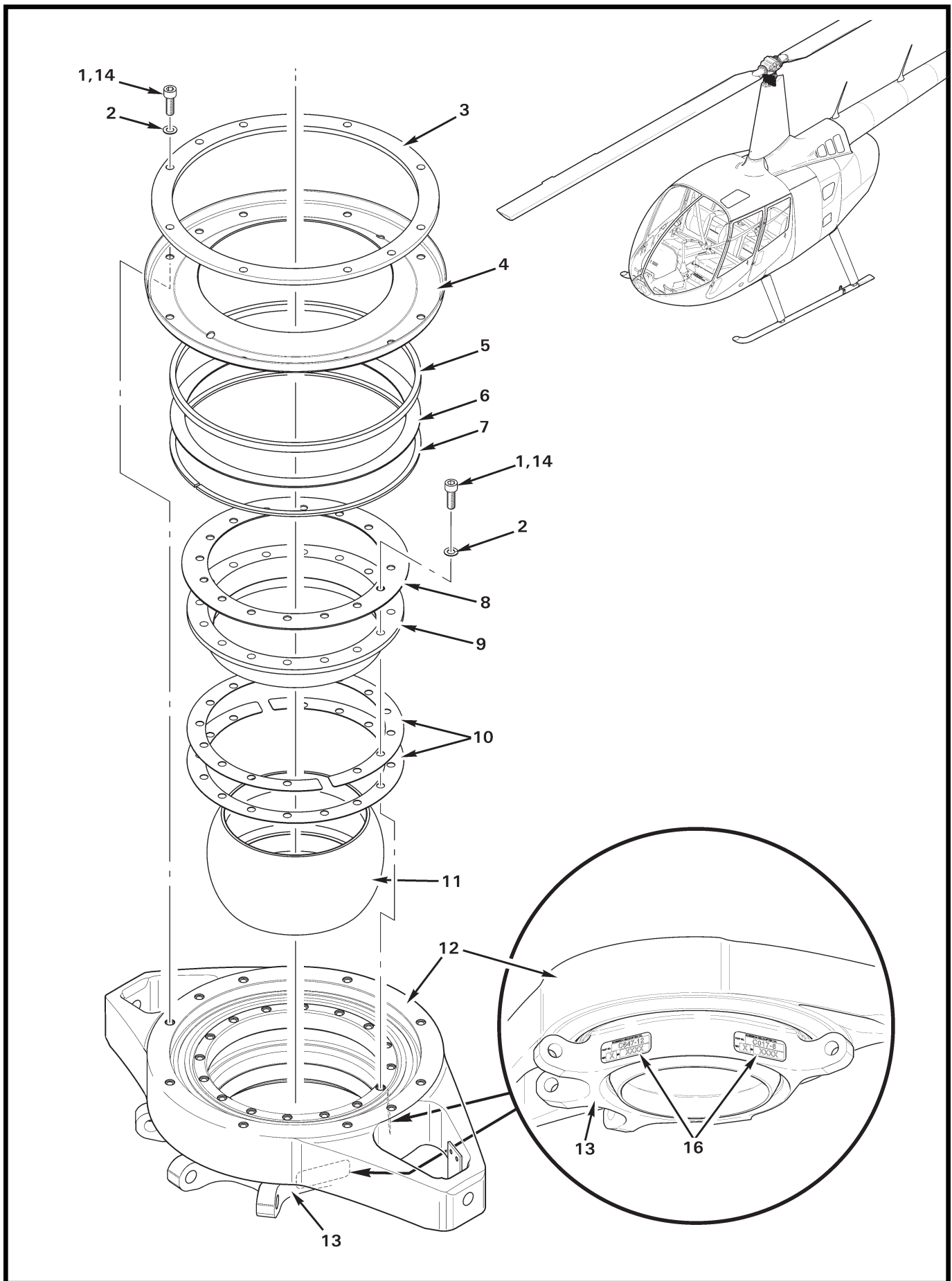


FIGURE AND INDEX NUMBER	PART NUMBER	DESCRIPTION	PARTS AVAIL	QTY PER ASSY
SWASHPLATE BALL INSTALLATION				
62-9-1	NAS1352N08-8	Screw (install using item 14 on threads)	X	26
2	NAS620-8L	Washer	X	26
3	C200-1	Retainer	X	1
4	C206-1	Retainer	X	1
5	C219-2	Spacer	X	1
6	C218-2	Shield	X	1
7	C219-1	Spacer	X	1
8	C218-1	Shield	X	1
9	C205-1	Sleeve Assembly	X	1
10	C197-1	Spacer (thickness = 0.016 in.)	X	A/R
	C197-2	Spacer (thickness = 0.020 in.)	X	A/R
	C197-3	Spacer (thickness = 0.025 in.)	X	A/R
	C197-4	Spacer (thickness = 0.032 in.)	X	A/R
	C197-5	Spacer (thickness = 0.040 in.)	X	A/R
	C197-6	Spacer (thickness = 0.050 in.)	X	A/R
11	C201-1	Ball Assembly	X	1
12	C199-2	Swashplate Assembly – Upper (Ref)		
13	F198-1	Swashplate Assembly – Lower (Ref)		
14	A257-9	Anti-Seize (Loctite 76732)	X	A/R
15	C647-12	Bearing Set – Swashplate (Ref; connects items 12 and 13; not shown)		
16	—	Identification Plate (C017-6 Assembly, and C647-12 bearing set; part number, revision letter and serial number)	O	2

NOTES

Intentionally Blank