

**KI-160 R22-series Full-Flow Oil Filter Kit Instructions**

**NOTE**

Visit [www.robinsonheli.com](http://www.robinsonheli.com) to verify kit instructions are current revision. Review instructions before installation; contact RHC Technical Support with questions. Verify kit contents match list; contact RHC Customer Service if parts are missing or damaged.

ITEM NUMBER	PART NUMBER	DESCRIPTION	QTY PER KI-160
<b>KIT CONTENTS</b>			
1	61173	Gasket - Adapter .....	1
2	76510	Gasket - Bypass valve .....	1
3	06E19769-0.63	Gasket - Temperature sender .....	1
4	A257-19.25oz	111 Valve lube and sealant (1/4 oz) .....	1
5	B123-2	Oil filter .....	1
6	D723-1	Adapter .....	1
7	KI-160 Instr.	Kit Instructions .....	1
8	STD-160	Lockwasher .....	4

**KI-160 Kit Instructions**

1. Turn battery switch off. Remove left and right A378 skirts.
2. Refer to Figure 1. Disconnect wire from A760-1 temperature sender.
3. Cut and discard safety wire and remove 53E22144 bypass valve, 76510 gasket, temperature sender, and 06E19769-0.63 gasket. Discard gaskets.
4. Remove 69510 housing, 62817 screen, 61173 gasket, and mounting hardware from engine accessory housing. Discard STD-160 lockwashers and gasket.
5. Refer to Figure 2. Install hardware (including new STD-160 lockwashers) securing (new) 61173 gasket and (supplied) D723-1 adapter on engine accessory housing. Verify straight side of gasket is oriented toward oil filter flange as shown. Special torque screws to 96 in.-lb and torque stripe per R22 Maintenance Manual (MM) Figure 2-1.
6. Install (new) 76510 gasket and bypass valve in adapter. Special torque to valve to 300 in.-lb.
7. Install (new) 06E19769-0.63 gasket (split side against adapter), and temperature sender in adapter. Special torque sender to 300 in.-lb. Install 0.032-inch diameter lockwire and safety sender to bypass valve.
8. Connect wire to temperature sender and special torque nut to 20 in.-lb. Position nipple over terminal.

## KI-160 Kit Instructions (continued)

9. Apply light coat A257-19 lube to (supplied) B123-2 oil filter's gasket. Install filter per instructions on filter housing.
10. Perform helicopter start and shut-down procedures per Pilot's Operating Handbook.
11. Inspect engine. Verify no oil leaks; adjust engine oil quantity as required.
12. Install skirts.

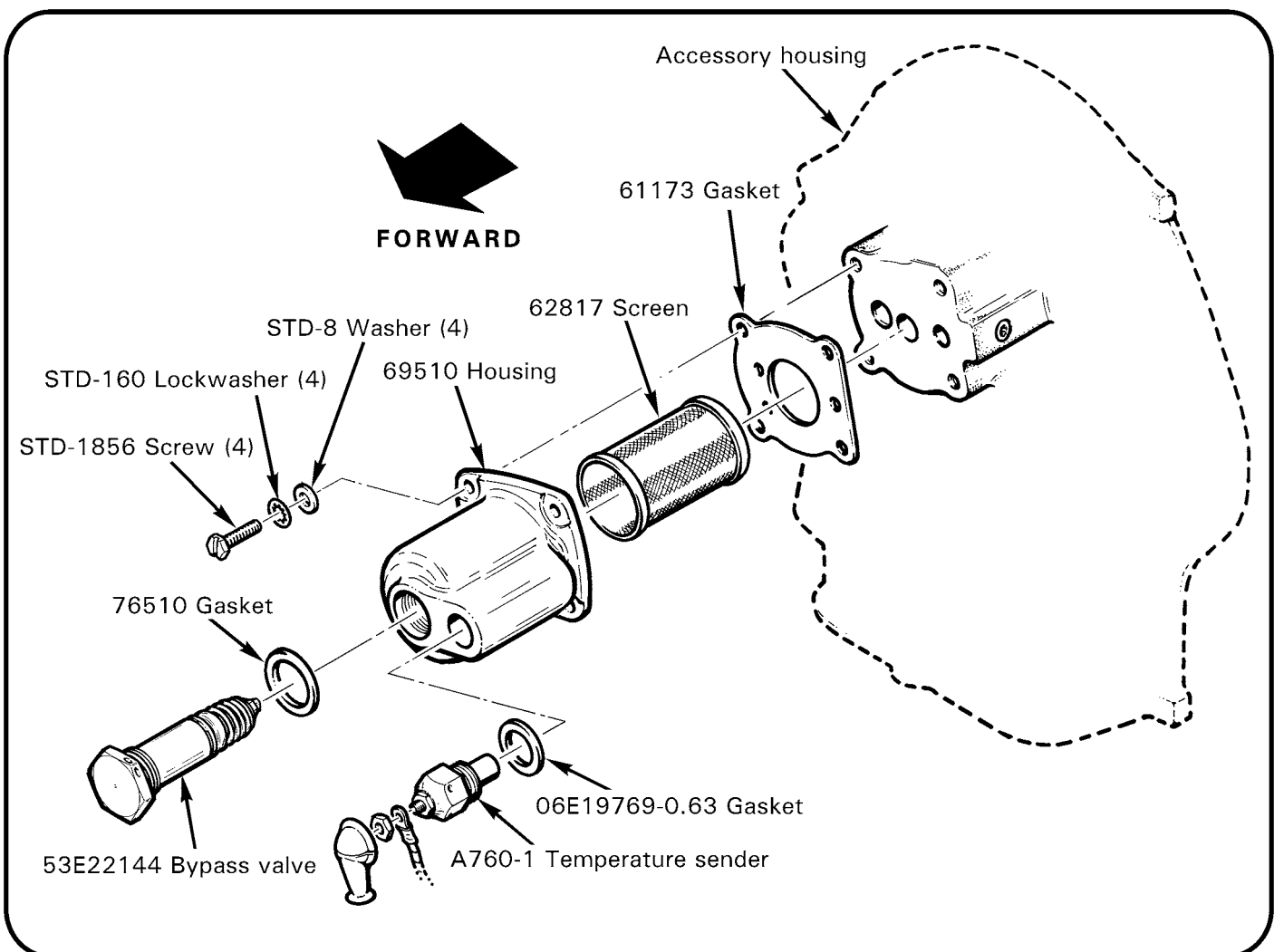


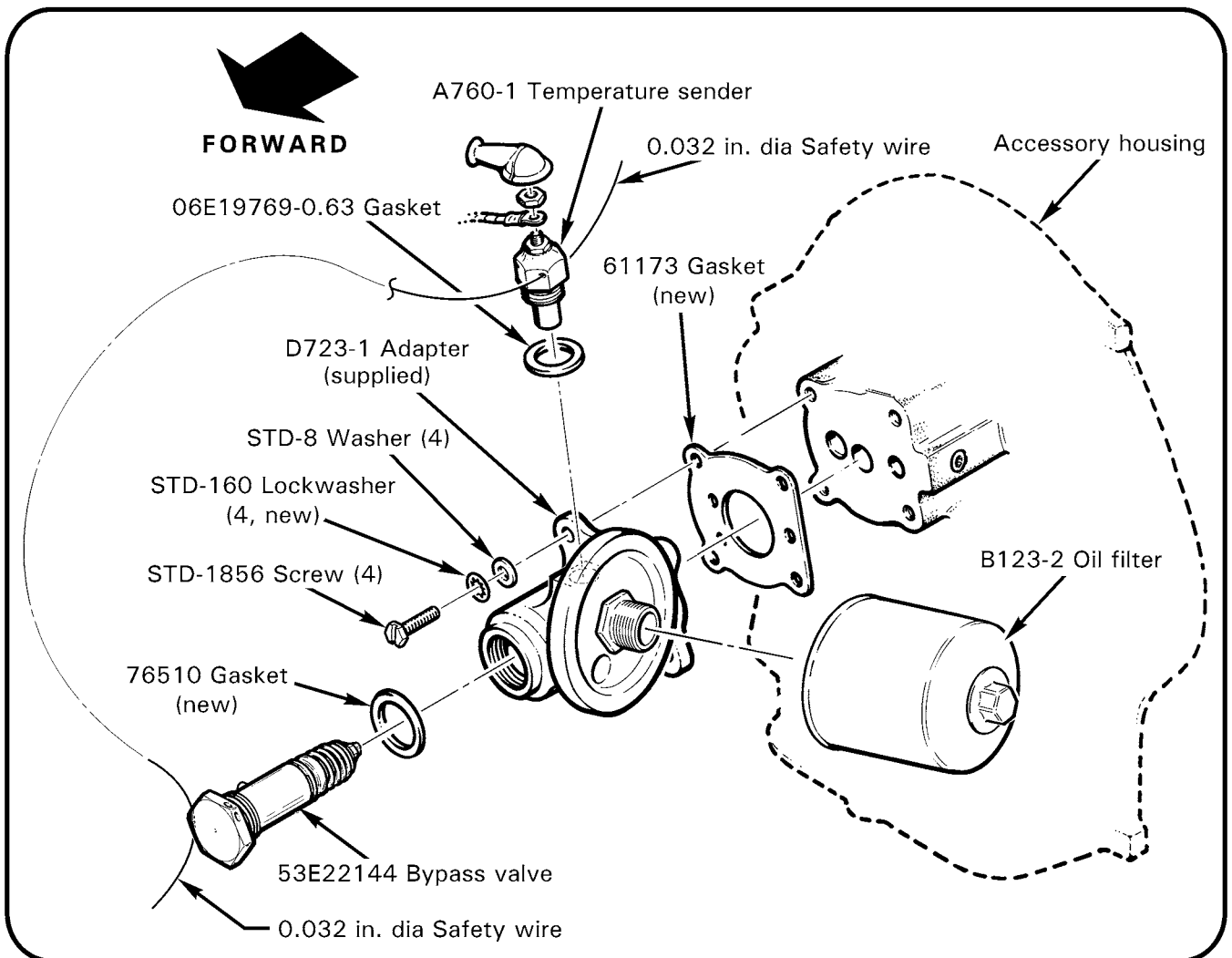
FIGURE 1 REMOVAL

**KI-160 Kit Instructions (continued)**

13. Revise Weight & Balance Record in Section 6 of helicopter's Pilot's Operating Handbook to incorporate the following data, as required:

Item	Weight	Long. Arm	Long. Moment	Lat. Arm	Lat. Moment
Oil filter installation	2.27 lb	96.20 in.	218.37 in.-lb	-3.0 in.	-6.81 in.-lb

14. Make appropriate maintenance record entries.



**FIGURE 2 INSTALLATION**